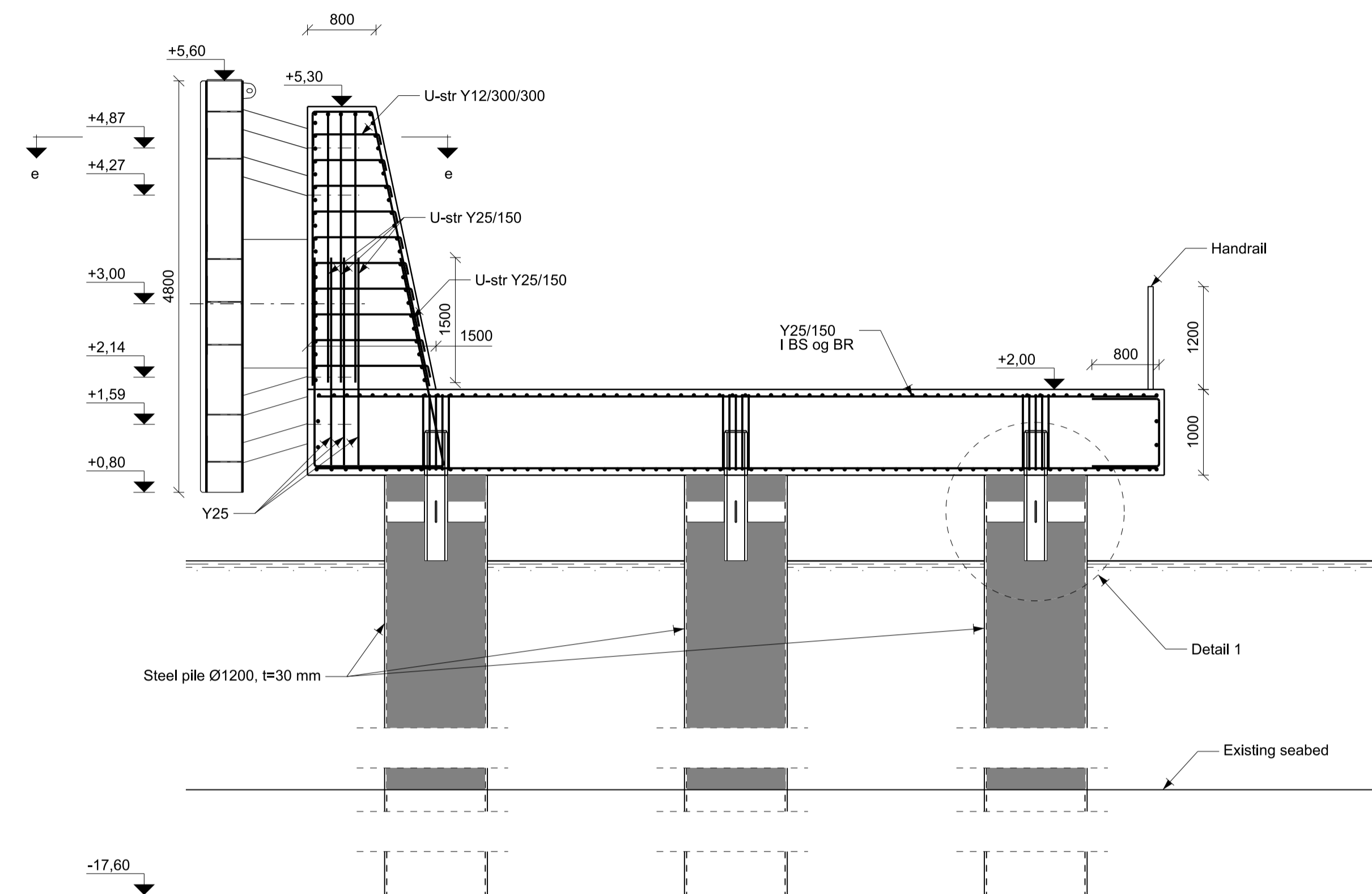
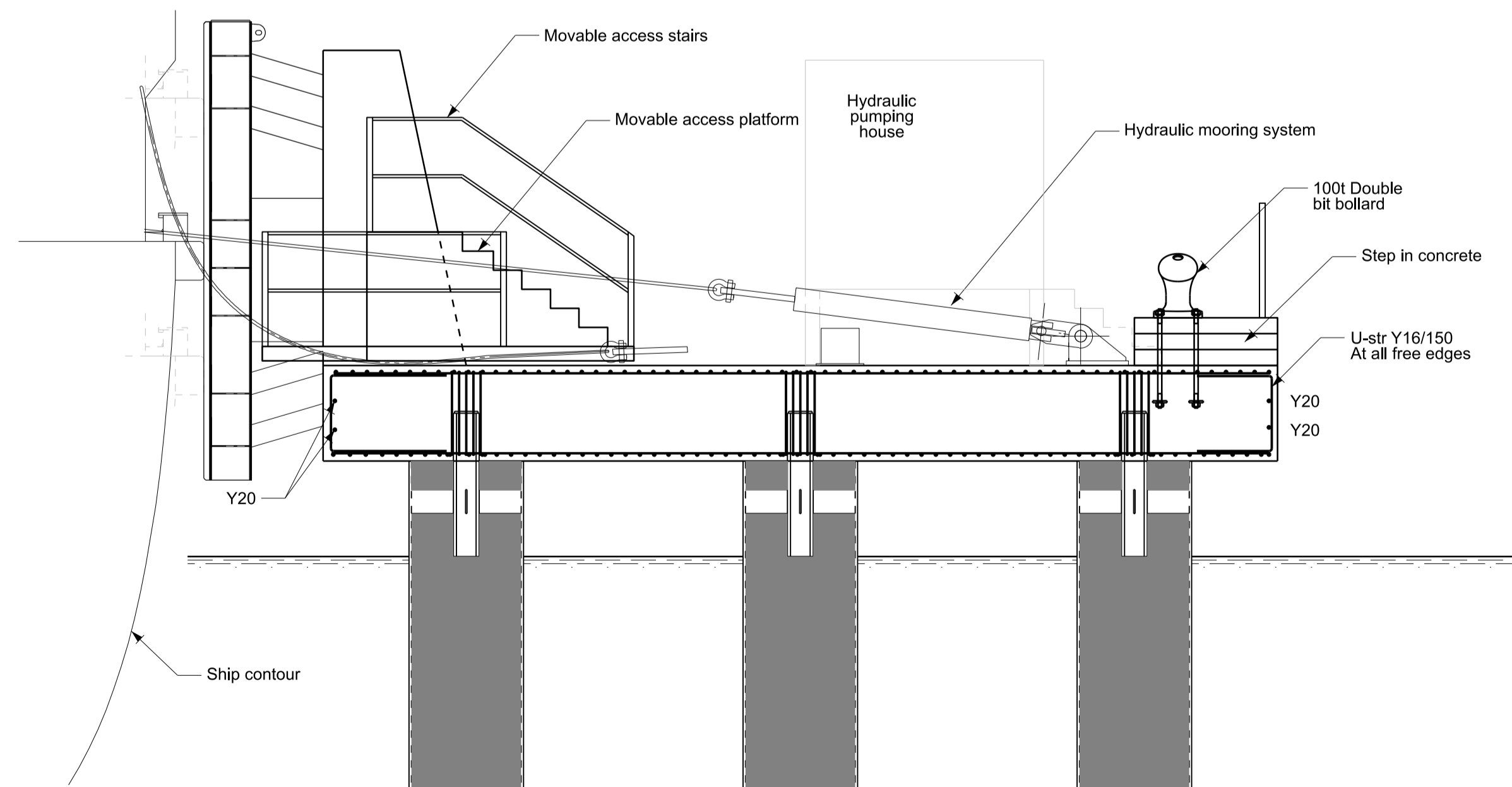


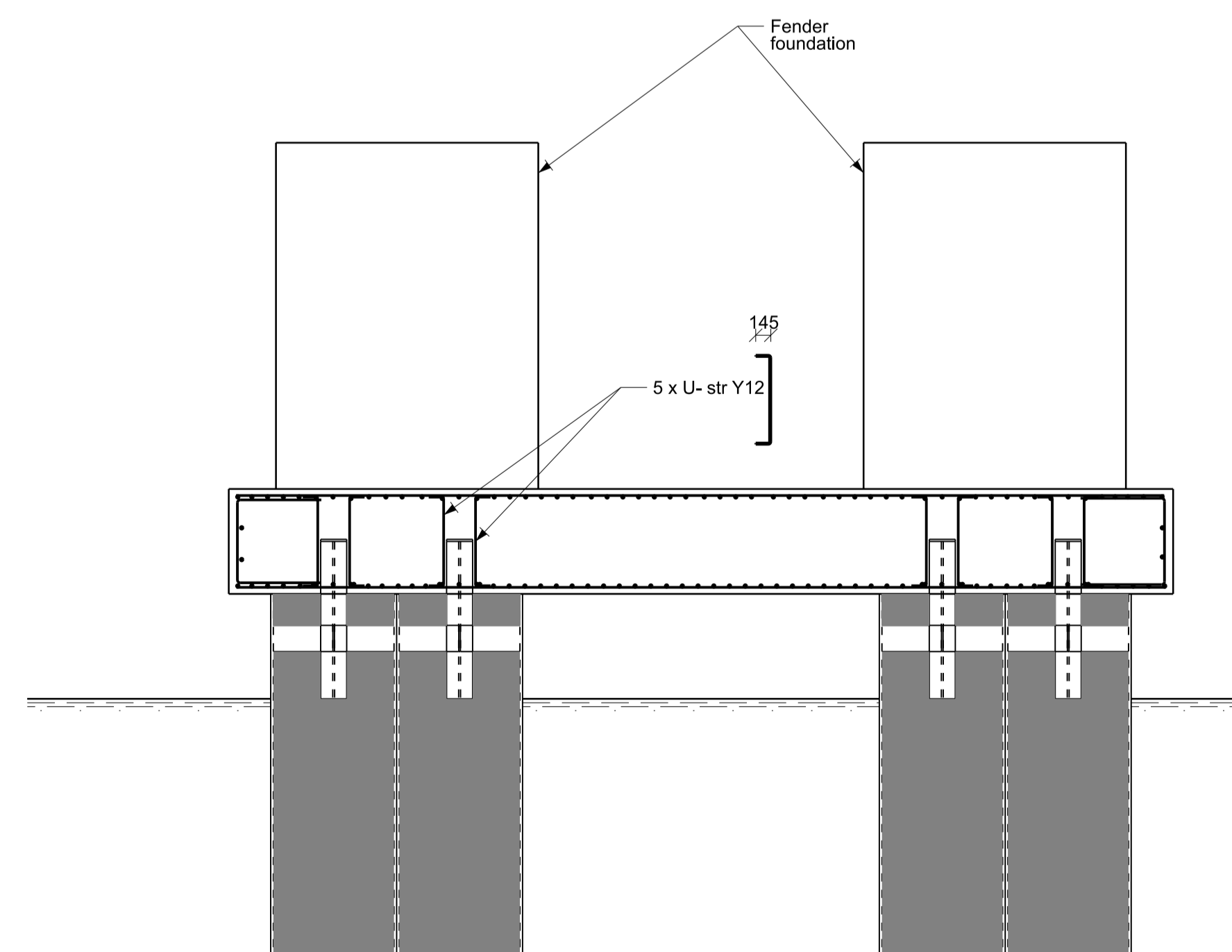
PLAN, 1:50



SECTION a-a, 1:50



SECTION b-b, 1:50



SECTION c-c, 1:50

SWE-1-25

NOTE:

All dimensions are in mm
Elevations are in m DVR90
Coordinat system in DKTM 3

All construction steel is S355J0
All reinforcement is B550B, fyk = 550MPa
Reinforced concrete is C40/50
Unreinforced concrete is C30/35

Coordinates for pile setting out are according to local system seen on drawings SWE-1-01

SIGNATURE:

Unreinforced concrete
PXX P indicates pile, XX indicates pile number

REFERENCE:

SWE-1-01 for plan position in berth 1
SWE-1-26 for details and section d-d, e-e

| Coord. for center pile | | |
|------------------------|--------|--------|
| Nr. | X | Y |
| P1 | +88.20 | +15.45 |
| P2 | +89.40 | +18.95 |
| P3 | +88.20 | +22.45 |
| P4 | +95.20 | +15.45 |
| P5 | +94.00 | +18.95 |
| P6 | +95.20 | +22.45 |

Revision/Text Desig./Drawn Controlled Approved Date

Designed/Drawn Controlled Approved
SEKA THJO HENH
Project no. Scale Date Page
23.0510.21 1:50 2022-06-27

Rødby Ferry Port Reconstruction PR24



PR24
Layup Berth
Duc d'albe, sections and plan Drawing no. SWE-1-25

PRINT DATE: 2022-06-27

CADFILE: E:\k3_1\work\1832_34\SWE-1-25.dgn